

# Daily Nifty Observer

Issue - 629

March 30, 2012

## Nifty Outlook

.....5210 levels will be important levels to watch for Nifty on intraday.....

## Support

5170/5150/5120

## Resistance

5190/5210/5250

## Market Strength Indicators

14 days RSI - Down by 0.87 points at 42.73 levels

14 days SchRSI - Down by 4.81 points at 2.49 levels

Stochastic - Up by 6.5 points at 22.59 levels

TSI - Down by 1.45 points

## Market Intensity Indicator

NFP - At discount of 1.85 from premium of 2.65 earlier

Advance - 833

Decline - 637

Volatility - Down by 0.01 points at 0.22 levels from previous

## Moving Average Indicator

20 days SMA - 5296.56

50 days SMA - 5305.97

200 days SMA - 5149.66

Bollinger Band - Around Upper Band

## Other Indicators

Gold - Up

Crude - Up

FII's Spot - Negative

DII's Spot - Positive

F&O - Positive

## Global Indices

Asian - Mixed

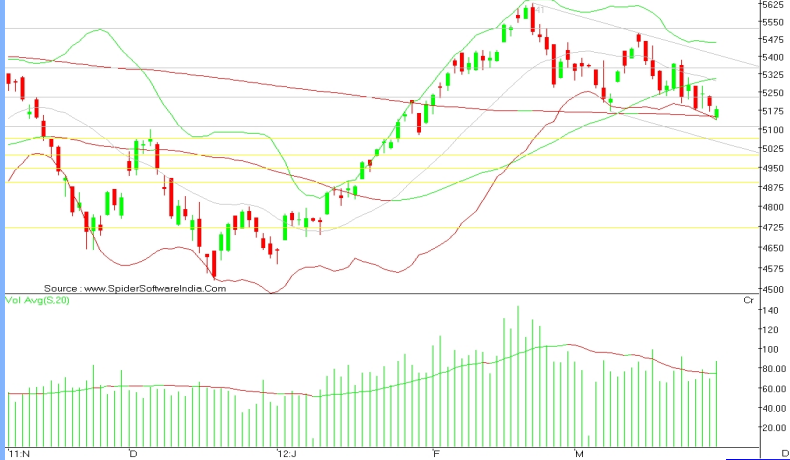
Europe - Down

US - Mixed

## Spot Nifty Daily Chart Analysis

NSE Nifty (N59901) 5145.95, 5194.30, 5135.95, 5178.85, 675336448 -0.31%

Price Avg(5,20) Avg(5,50) Avg(5,200) Col(5,20,2,00)



Spot Nifty closed at 5178.85 down by 0.31 % after ranging trading session with rise in volume which was above its 20 period SMA. It made a high of 5194.30 and low of 5135.95 levels in intraday.

Nifty closed below its 20 period, below its 50 periods and above its 200 periods SMA. Long term trend will remain bullish till Nifty is trading above its 200 days SMA .

Momentum oscillator is indicating that Nifty is moving out from its over bought zone on intraday chart.

**On daily chart 5210 levels will continue to be an important levels to watch for intraday. Above 5210 it may move towards 5280 levels on intraday. Sustainability below it will force Nifty to move towards 5150 levels or below.**

## 60 Minute Chart Analysis

NSE Nifty (N59901) 5178.85, 5542, 868500515

0, 0.00, 0.00, 0, 5193.65, 5136.10, 0.00%

Price STrend(3,00,10) Col(5,20,2,00)



14 days Schotestic RSI (60 minutes chart) closed at 76.57 levels & traded across its 9 period EMA for whole of the trading session and managed to close above it. Today it may try to trade above its 9 period EMA levels allwoing Nifty to trade above below 5220/5250 levels.

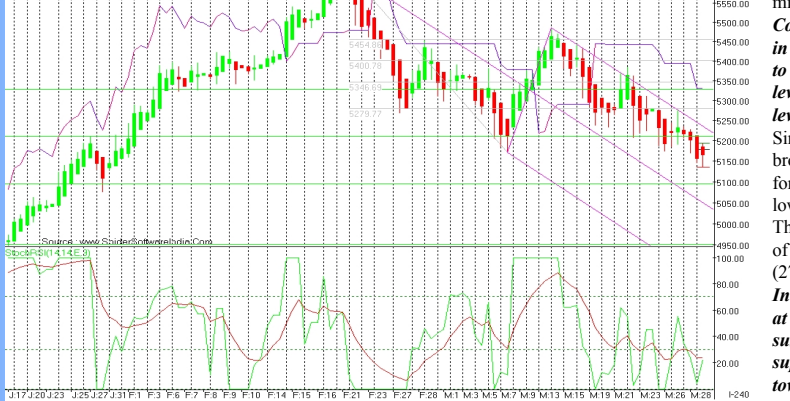
**Today Nifty breached 5150 levels but closed above it at 5178 levels. 5220/5250 levels on intraday will act as an important resistance levels with 5095 as support.Sustainability below 5250 levels will force Nifty to test 5095 levels or below it in days to come.**

## 240 Minute Chart Analysis

NSE Nifty (N59901) 5178.85, 5542, 868500515

0, 0.00, 0.00, 0, 5193.65, 5136.10, 0.00%

Price STrend(3,00,10)



## Stocks Corner

### Fresh Long

|            |         |          |          |          |
|------------|---------|----------|----------|----------|
| IVRCLINFRA | RANBAXY | ADANI    | ADANI    | INDIA    |
| CENTURY    | TEX     | BHARAT   | FORG     | ABB      |
| VOLTAS     | BPCL    | INDUSIN  | DISHTV   | IBREALE  |
| CUMMINS    | IND     | ASIANPA  | HEXAWA   | HEROMOTO |
| MRPL       | PFC     | JPASSOCI | APOLLOTY | RELCAPIT |
| BFUTILIT   | COREE   | UTE      | PANTALOO | PETRONET |
| TATAMTR    | DRVR    | WIPRO    | ONGC     | ULTRACEM |
| GRASIM     | ANDHRA  | BANK     | ABAN     | BAJAJ-AU |
| HCC        | BHUSAN  | STL      | SRTRANS  | HINDPETR |
| KOTAKB     | BANK    | FEDERAL  | BANK     | LUPIN    |
| PTC        | AXISB   | ANK      | ESSAROIL | SUNTV    |
| HINDZIN    | C       | GAIL     | DRREDDY  | PIRHEAL  |
| HCLTECH    | 3INFOTE | CH       | TATAMOT  | ORS      |
| BANKIND    | IA      | CNXPSE   | IDFC     | OPTOCIR  |
| SKUMARS    | YNF     |          |          |          |

### Long Liquidation

|         |         |        |          |          |          |
|---------|---------|--------|----------|----------|----------|
| TULIP   | GODREJ  | IND    | RELIANCE | AMBUJACE | HAVELLS  |
| M&M     | JSWSTE  | EEL    | CANBK    | POWERGR  | ICICIBAN |
| TATASTE | EEL     | BOMDYE | ING      | HDIL     | COLPAL   |
| SINTEX  | AREVAT  | &D     | DENABAN  | K        | GLAXO    |
| TTKPRE  | STIGGES | SHIP   | TCS      | JINDALSA | BEML     |
| GVKPIL  | SUZLON  | APIL   | CESC     | MERCATOR | JISLJALE |
| MCLEOD  | RUSS    |        |          |          |          |

### Short Covering

|         |       |        |         |        |        |        |       |
|---------|-------|--------|---------|--------|--------|--------|-------|
| NCC     | SOBHA | JINDAL | STEL    | INDIAN | B      | ZEEL   | UNION |
| TITAN   | DABUR | TATAPO | WER     |        |        | MCDOWE | L-N   |
| ORCHID  | CHEM  | MARUTI | TATACHE | M      | TECHM  | RAYMON | D     |
| JSWENE  | RGY   | HOTELE | EELA    | ARVIND | IRB    | JUBLFO | OD    |
| PUNJLLO | YD    | DIVISL | AB      | GSPL   | GMRINF | RA     |       |

### Fresh Short

|         |         |         |         |          |          |
|---------|---------|---------|---------|----------|----------|
| NFTYMC  | AP50    | ALBK    | RELINF  | ACC      | RPOWER   |
| BRFL    | IFCI    | PNB     | EXIDE   | IND      | NIFTY    |
| DCB     | FINANTE | CH      | INDHOT  | ASHOK    | KEY      |
| CHAMBL  | FERT    | RECLTD  | HINDAL  | CO       | HDFCBAN  |
| SESAGOA | STER    | CNXINF  | RA      | SYNDIBAN | ADANIPO  |
| LICHSG  | FIN     | BATAIND | IA      | EDUCOMP  | PATELENG |
| HINDUN  | LVR     | KTKBAN  | K       | TATACOM  | ALOKTEXT |
| UNIPHOS | ROLTA   | BAJAJH  | LDNG    |          | MAX      |
| CNXIT   | BHEL    | IOB     | TATAGLO | BAL      |          |
| SAIL    | BALRAM  | CHIN    | NMDC    | BGRENER  | G        |
| RENUKA  | BHARTI  | ARTL    | INFY    | VIDEOIN  | D        |
| ONMOB   | ILE     | CENTRAL | BK      | LITL     | STRTECH  |
| UCOBAN  | K       | VIPIND  | SOUTH   | BANKLT   |          |
| POLARIS | RCOM    | JETAIR  | WAYS    |          | IOC      |
| CROMPG  | REAV    | MPHASIS | TTML    |          | ABGSHIP  |
| ESCORTS | SIEMENS | BAJAJH  | IND     | DELTA    | ACORP    |
| MTNL    | RUCHSO  | YA      | DCHL    | IDBI     | WELCORP  |
| JSWISPA | T       | SREINF  | RA      | DHANBAN  | EK       |

## Performance Corner

### Daily Calls Monitor

**Buy Nifty April 12 future @ 5153/5159 (spot) sl 5127 tgt 5184/5205; 1st tgt**

**Buy SBI April 12 future @ 2063/2070 (spot) sl 2044 tgt 2090/2111**

**Buy Hindalco @ 123.50 sl 121.70 tgt 125.20/126.70; 1st tgt**

**Buy Axis Bank @ 1111/1115 sl 1095 tgt 1132/1144; 1st tgt**

**Buy JSW Steel @ 701/705 sl 692 tgt 714/427**

**Buy Tata Steel @ 447/450 sl 443 tgt 455/459; 1st tgt**

**Do not carry any long intraday position..keep booking profits..**

**Buy Copper April 12 future @ 430.20/430.60 sl 428.50 tgt 433.10/435.50**

**Buy Crude April 12 future @ 5405/5411 sl 5387 tgt 5435/5454; sl triggered in crude intraday buy call**

**Buy Silver May 12 future @ 56450/56550 sl 56100 tgt 57050/57550**

## Analyst Certificate & Disclaimer

**DISCLAIMER:** The document is not for public distribution and has been furnished solely for information and must not be reproduced or redistributed to others. Opinion expressed is the current opinion as of the date appearing on the material only. Further, the information in the document has been printed on the basis of publicly available information; internal data and other reliable sources believed to be true and are for general guidance only but which may not be verified independently. While every effort is made to ensure the accuracy and completeness of information contained, the company takes no guarantee and assumes no liability for any errors or omissions of the information. No one can use the information as the basis for any claim, demand or cause of action. All investment information and opinion are subject to change without notice. Recipients of this material should rely on their own investigations and take their own professional advice. Each recipient of this document should make such investigations as it deems necessary to arrive at an independent evaluation of an investment in the securities of companies referred to in this document (including the merits and risks involved), and should consult their own advisors to determine the merits and risks of such an investment. This material is for personal information and none is responsible for any loss incurred based upon it. The investments discussed or recommended in this report may not be suitable for all investors. It should not be considered to be or taken as an offer to sell or a solicitation to buy/sell any security. Price and value of the investments referred to in this material may go up or down. Past performance is not a guide for future performance. Certain transactions - futures, options and other derivatives as well as non-investment grade securities - involve substantial risks and are not suitable for all investors. Reports based on technical analysis centers on studying charts of a stock's price movement and trading volume, as opposed to focusing on a company's fundamentals and as such, may not match with a report on a company's fundamentals. Analyst who has issued this report, may, on the date of this report, and from time to time, have long or short positions in, and buy or sell the securities of the companies mentioned herein or engage in any other transaction involving such securities and earn brokerage or compensation or act as advisor or have other potential conflict of interest with respect to company/ies mentioned herein or inconsistent with any recommendation and related information and opinions.