

Daily Nifty Observer

Issue - 659

May 14, 2012

Nifty Outlook

.....on Monday if Nifty holds low of Friday (4906.65), it will give a thrust towards 4990/5020 levels with 4950 as intraday resistance levels

Support

4910/4890/4870

Resistance

4950/4970/4990

Market Strength Indicators

14 days RSI - Down by 1.93 points at 28.89 levels

14 days SchRSI - Unchanged at 0.00 levels

Stochastic - Up by 1.61 points at 8.00 levels

TSI - Down by 3.14 points

Market Intensity Indicator

NFP - At premium of 2.45 from premium of 1.1 earlier

Advance - 465

Decline - 998

Volatility - Unchanged at 0.16 levels from previous

Moving Average Indicator

20 days SMA - 5169.95

50 days SMA - 5243.08

200 days SMA - 5102.88

Bollinger Band - Around Middle Band

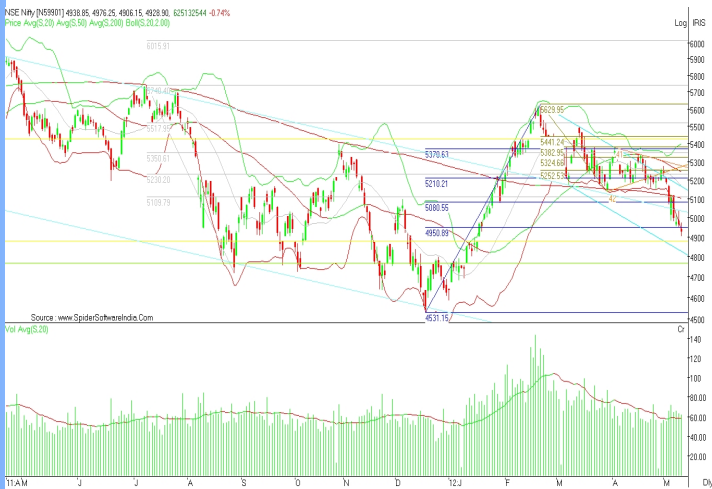
Other Indicators

FII's Spot - Positive

DII's Spot - Negative

F&O - Negative

Spot Nifty Daily Chart Analysis



Spot Nifty closed at 4928.90 down 0.74 % after down trending but ranging trading session with fall in volume which was above its 20 period SMA. It made a high of 4976.25 and low of 4906.15 levels in intraday.

Nifty closed below its 20 period, below its 50 periods and even below its 200 periods SMA. LONG TERM TREND WILL REMAIN BEARISH AS NIFTY CLOSED BELOW ITS 200 DAYS SMA ON MONDAY (07/05/2012).

Momentum oscillator is indicating that Nifty is trading in its over sold zone on intraday chart.

Continuation of trading below 4950 levels will make 4950 as strong resistance levels for coming trading sessions. It will open gate for 4890/4810 levels. Below it Nifty will face strong support at 4777 levels. Above 4950 levels Nifty has ample resistance at 5020/5100 levels.

60 Minute Chart Analysis



14 days Schotastic RSI (60 minutes chart) closed at 48.13 levels & traded across its 9 period EMA for whole of the trading session and managed to close above it. On Monday it may try to trade above its 9 period EMA levels allowing Nifty to continue trading above 4910/4890 levels.

For whole of trading session on Friday Nifty traded below 4950 levels and if it continued on Monday the probability to break Friday's low (4906.60) will grow strong to test 4890 levels or below on intraday. If however, Nifty sustains Friday's low it will force Nifty above 4950 levels towards 4990/5020 levels.

240 Minute Chart Analysis



Today was 23rd day for Nifty in bear zone after 4th day in bull zone for Super Trend, over 240 minutes Heikin Candle.

Today Nifty sustained and closed below 4950 levels.

After finding 4 days of support above 2nd speed line Nifty closed below it on Friday. Speed line is drawn from the high of 5629.95 (22/02/12) and low of 5136.10 (29/03/12).

In next few 240 minute Heikin candle Nifty have to give close above 2nd speed line to move towards 3rd speed line (around 5100 levels). If it continues closing below 3rd speed line then it will increase probability to slide towards 1st speed line (around 4500 levels).

Note on Nifty Intraday Price, OI & Volume (11/05/2012)

On Friday fall in Nifty (0.74 %) was registered with rise in Nifty May 12 futures open position (0.75 %) and fall in Nifty spot intraday volume (2.39 %).

Nifty fall with rise in OI but fall in volume suggesting that the market is an indication that a sharp rally against downtrend will develop creating a sell point for downtrend.

Current fall of 0.74 % in Nifty was due to fresh short build up in Nifty May 12 series.

For Monday, Nifty may try to move towards 4990/5020 levels with 4910/4890 levels as intraday support zone. Closing above 4950 levels will only ensure continuation of consolidation around 5000 levels, else Nifty will slide towards 4810/4777 levels in days to come.

Stocks Corner

Fresh Long

JUBLFOOD	JPASSOCIAT	BAJAJ-AUTO	BATAINDIA	TATAMOTORS
ESSAROIL	TATAMTRDVR		SESAGOA	GUJFLUORO IDEA
AXISBANK	DELTACORP	IIC	FEDERALBNK	ESCORTS
RELCAPITAL		JISLJALEQS	BHEL	TATACOFFEE
VIDEOIND	RELIANCE	PUNJLOYD	OFSS	JINDALSTEL PFC
GESHIP	KOTAKBANK		NMDC	BOMDYEING

Long Liquidation

MPHASIS	HEROMOTOCO	BAJAJHLDNG	ICICIBANK	TCS
IOB	VIJAYABANK	SKUMARSYNF	CHAMBLFERT	
NHPC	HINDUNILVR	RPOWER	PIRHEALTH	RECLTD
IDBI	CENTURYTEX	TITAN	MAX	PRAJIND
UCOBANK	UNIPHOS	STRTECH	ZEEL	BHUSANSTL
KTKBANK	HCLTECH	DCB	COREEDUTEC	DISHTV
RAYMOND	ABB	HINDPETRO	WELCORP	ORIENTBANK
ROLTA	ASIANPAINT	NTPC	HFDC	TATASTEEL
OPTOCIRCUALOKTEXT		PNB	PANTALOONR	IGL
HEXAWARE	APIL	IOC	LUPIN	RENUKA
GMDCLTD	WIPRO	ONMOBILE	LITL	ONGC
CROMPGREAV		ABAN	CUMMINSIND	SRTRANSFIN
TATACHEM	CIPLA	PTC	SUZLON	ALBK
UNITECH	MRF	NCC	GMRINFRA	BHARATFORG
AUROPHARMA		RANBAXY		

Short Covering

ABGSHIP	HDIL	IDFC	APOLLOTYRE	CENTRALBK
ABIRLANUVO		COLPAL	UNIONBANK	GVKPIL
BANKINDIA	BANKBARODA		YESBANK	DLF
RCOM	MRPL	SUNTV	JINDALSAW	DENABANK
EDUCOMP	ANDHRABANK		DIVISLAB	PATNI
STER	CANBK	RUCHISOYA		PETRONET

Fresh Short

BFUTILITIE	BANKNIFTY	GLAXO	BEML	JETAIRWAYS
SAIL	SYNDIBANK	SOBHA	IBREALEST	RELINFRA
HAVELLS	MTNL	GSPL	NIFTY	JPPower
M&M	FORTIS	BHARTIARTL	CAIRN	INDUSINDBK
CNXT	BREL	CNXINFRA	POWERGRID	CNPSE
GAIL	INDHOTEL	HDFCBANK	NTYMCAP50	INFY
NAGAROH	LT	TTML	SIEMENS	HINDZINC
AMBUJACEM		BAJAJHIND	PATELENG	TVSMOTOR
JSWENERGY	ULTRACEMCO		IFCI	VOLTAS
COALINDIA	BOSCHLTD	DRREDDY	BEL	GODREJIND
ADANIENT	ASHOKLEY	SREINFRA	FINANTECH	BGREENERGY
ACC	ADANIPTS		BIOCON	TECHM
POLARIS	IVRCLINFRA	GRASIM	TATAGLOBAL	HINDALCO
SOUTHBANK	SUNPHARMASCI		SINTEX	ORCHIDCHEM
TATAPOWER		JSWSTEEL	HINDOILEXP	TTKPRESTIG
INDIACEM	INDIANB	IRB		JSWISPAT

Performance Corner

Daily Calls Monitor

Short Infy may 12 future @ 2320/2327 (spot) sl 2345 tgt 2295/2274; book full profit in infy intraday short call @ 2295
Buy Jubilent food @ 1065/1070 sl 1045 tgt 1095; may book full profit in jubilent food @ 1080
Buy Nifty May 12 future @ 4924/4930 (spot) sl 4889 tgt 4960/4990; 1st tgt
Short M&M may 12 future @ 646 (spot) sl 654 tgt 637; may book full profit in M&M intraday short at 642.00/642.50
Buy SBI @ 1840/1835 sl 1820 tgt 1880/1890; 1st tgt
Buy Federal bank @ 515 sl 411 tgt 422 - Correction - entry rate of federal bank is 415 not 515
Buy LT @ 1130/1135 sl 1120 tgt 1150/1164; 2nd tgt
Buy Reliance @ 695/699 sl 689 tgt 707/712
Buy Bank Nifty May 12 future @ 9360/9380 sl 9290 tgt 9520/9610; book full profit in bank nifty @ 9450
Buy JSW Steel @ 640 sl 634 tgt 650/657; sl

Buy copper June 12 future @ 431.30/431.70 sl 429.70 tgt 433.70/435.90
Buy Crude June 12 future @ 5202/5207 sl 5187 tgt 5231/5245
Buy Silver July 12 future @ 53850/53950 sl 53550 tgt 54450/54700

Analyst Certificate & Disclaimer

DISCLAIMER: The document is not for public distribution and has been furnished solely for information and must not be reproduced or redistributed to others. Opinion expressed is the current opinion as of the date appearing on the material only. Further, the information in the document has been printed on the basis of publicly available information; internal data and other reliable sources believed to be true and are for general guidance only but which may not be verified independently. While every effort is made to ensure the accuracy and completeness of information contained, the company takes no guarantee and assumes no liability for any errors or omissions of the information. No one can use the information as the basis for any claim, demand or cause of action. All investment information and opinion are subject to change without notice. Recipients of this material should rely on their own investigations and take their own professional advice. Each recipient of this document should make such investigations as it deems necessary to arrive at an independent evaluation of an investment in the securities of companies referred to in this document (including the merits and risks involved), and should consult their own advisors to determine the merits and risks of such an investment. This material is for personal information and none is responsible for any loss incurred based upon it. The investments discussed or recommended in this report may not be suitable for all investors. It should not be considered to be or taken as an offer to sell or a solicitation to buy/sell any security. Price and value of the investments referred to in this material may go up or down. Past performance is not a guide for future performance. Certain transactions - futures, options and other derivatives as well as non-investment grade securities - involve substantial risks and are not suitable for all investors. Reports based on technical analysis centers on studying charts of a stock's price movement and trading volume, as opposed to focusing on a company's fundamentals and as such, may not match with a report on company's fundamentals. Analyst who has issued this report, may, on the date of this report, and from time to time, have long or short positions in, and buy or sell the securities of the companies mentioned herein or engage in any other transaction involving such securities and earn brokerage or compensation or act as advisor or have other potential conflict of interest with respect to company/ies mentioned herein or inconsistent with any recommendation and related information and opinions.