

# Daily Nifty Observer

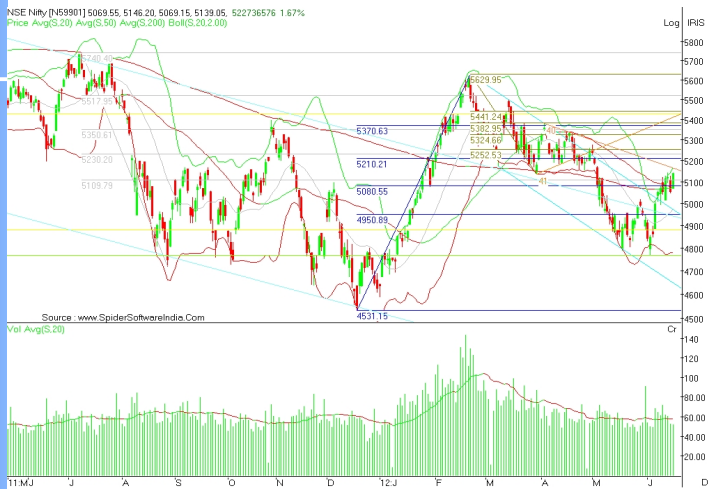
Issue - 683

June 18, 2012

## Nifty Outlook

....5150 levels will act as immediate resistance with 5110 as immediate support for monday ....

## Spot Nifty Daily Chart Analysis



Spot Nifty closed at 5139.05 up 1.67 % after up trending trading session with fall in volume which was below its 20 period SMA. It made a high of 5146.20 and low of 5069.15 levels in intraday. Nifty closed above its 20 period, above its 50 periods and above its 200 periods SMA. Momentum oscillator is indicating that Nifty is trading around its over bought zone on intraday chart.

**After trading in short term bear zone for almost 24 trading days Nifty since seven trading sessions is in bull zone. If next week Nifty manages to give closing above its 20 period SMA, it will be indicative for short to mid term bull phase.**

**On monday 5110 levels will be immediate support levels, below which 5080/5050 levels will act as intraday support zone. Sustainability above 5100 levels will open for 5220 levels and above in days to come, with 5150 levels as immediate resistance.**

## 60 Minute Chart Analysis



14 days Schotestic RSI (60 minutes chart) closed at 100.0 levels & traded above its 9 period EMA for whole of the trading session and managed to close above it. On monday it may try to come below its 9 period EMA levels allowing Nifty to resist strongly around 5150 levels.

Nifty today initiated its up trend from the very first trading hour and continued till last trading hour. It managed to close above an important intraday resistance of 5137 levels. On monday continued sustainability above 5100 levels will only enforce nifty to breach 5150 levels. Above 5150 levels 5180/5220 levels will act as strong resistance zone. 5080 levels will be crucial intraday support.

## 240 Minute Chart Analysis



After 3 day for Nifty in bear zone, since eight days it moved in bull zone and closed above Super Trend, over 240 minutes Heikin Candle.

Today Nifty closed again above 5100 levels.

Nifty for 7th day closed above its 3rd speed line and tested 4th speed line on intraday. Speed line is drawn from the high of 5629.95 (22/02/12) and low of 5136.10 (29/03/12).

**In next few 240 minute Heikin candle Nifty have to give closing above 3rd speed line to move towards or above 4rd speed line (around 5150 levels). Only closing below 3rd speed line will increases probability to slide towards 2st speed line (around 4800 levels).**

## Note on Nifty Intraday Price,OI & Volume (15/06/2012)

On friday rise in Nifty (1.67 %) was registered with fall in Nifty June 12 futures open position (2.09 %) and fall in Nifty spot intraday volume (2.13 %).

Nifty rise with fall in OI and fall in volume suggesting that the market is running out of traders willing to open or hold an open long. Trades are liquidating both losing short position and closing winning long positions. A higher probability the market is set to retrace in price lower at some point forward.

Current rise of 1.67 % in Nifty was due to short covering in Nifty June 12 series.

**Fresh long build up along with short covering on Monday will keep Nifty afloat 5100 levels. However, fresh short build up along with long liquidation initiates than Nifty may again move below 5100 levels. Above 5100 levels Nifty will resist strongly to sustain at 5150 levels.**

## Support

5110/5080/5050

## Resistance

5150/5170/5190

## Market Strength Indicators

14 days RSI - Up by 6.3 points at 60.26 levels

14 days Schotestic RSI - Up by 24.62 points at 96.82 levels

Stochastic - Down by 4.68 points at 72.0 levels

TSI - Up by 2.98 points

## Market Intensity Indicator

NFP - At premium of 8.65 from discount of 0.65 earlier

Advance - 824

Decline - 604

Volatility - Down by 0.02 points at 0.18 levels from previous

## Moving Average Indicator

20 days SMA - 4972.41

50 days SMA - 5070.13

200 days SMA - 5071.99

Bollinger Band - Trading around Upper Band

## Other Indicators

FII's Spot - Positive

DII's Spot - Negative

F&O - Positive

## Stocks Corner

### Fresh Long

|                 |            |            |            |
|-----------------|------------|------------|------------|
| INDIACEM        | TATAMOTORS | GRASIM     | SREINFRA   |
| TATAMTRDVR      | MCDOWELL-N | GMDCLTD    | JSWENERGY  |
| RELINFRA        | RELCAPITAL | BAJAJHIND  | AMBUJACEM  |
| APIL            | JPASSOCIAT | TECHM      | ICICIBANK  |
| PIRHEALTH       | DLF        | ACC        | AUROPHARMA |
| MARUTI          | BHUSANSTL  | HEROMOTOCO | ADANIPOWER |
| KOTAKBANK       | EXIDEIND   | LT         | HINDUNILVR |
| AXISBANK        | BHARTIARTL | CENTURYTEX | IFCI       |
| TATAPOWER       | HCLTECH    | JINDALSAW  | ULTRACEMCO |
| SUZLON          | BOSCHLTD   | CAIRN      | SAIL       |
| BANKBARODA      | BHARATFORG | SAIL       | OPTOCIRCU  |
| SOUTHBANK WIPRO | LICHSGFIN  | CENTRALBK  | INDHOTEL   |
| FEDERALBNK      | CIPLA      | COREEDUTE  | TEC        |
| BAJAJHLDNG      | OIL        | BHEL       | UNIONBANK  |
| JPPOWER         | SKUMARSYNF | HAVELLS    | HDFC       |
| UNITECH         |            | IDEA       |            |

### Long Liquidation

|            |                    |          |            |           |
|------------|--------------------|----------|------------|-----------|
| NMDC       | TTKPRESTIGALOKTEXT | BRFL     | KTKBANK    | PETRONET  |
| JISLJALEQS | INDIAINFO          | HINDZINC | BEL        | GSPL      |
| TTML       | JETAIRWAYS         |          | CHAMBLFERT | HINDPETRO |
| COLPAL     |                    |          |            | SESAGOA   |

### Short Covering

|                     |            |            |            |            |           |
|---------------------|------------|------------|------------|------------|-----------|
| RENUKA              | IBREALEST  | PFC        | GMRINFRA   | FINANTECH  | ALBK      |
| DENABANK            | POLARIS    | PNB        | RECLTD     | INDIANB    | IIDIL     |
| M&M                 | CANBK      | EDUCOMP    | HDFCBANK   | RPOWER     | DCB       |
| BANKNIFTY           | HEXAWARE   | PUNJLLOYD  | BFUTILITIE | STRTECH    |           |
| PANTALOONR          | SYNDBANK   | TITAN      | IOB        | JSWISPAT   |           |
| SUNPHARMAVIJAYABANK |            | LITL       | TATASTEEL  |            |           |
| APOLLOTYRE          | ANDHRABANK |            | TATAGLOBAL |            |           |
| NIFTY               | HINDOILEXP | CNXINFRA   | IDFC       | DRREDDY    | IDBI      |
| DELTACORP           | SBIN       | ESSAROIL   | DISHTV     | TCS        | RELIANCE  |
| INDUSINDBK          | PTC        | NCC        | ITC        | NTPC       | RANBAXY   |
| PATELENG            | MCLEODRUSS |            | BGREENERGY | IRB        | SINTEX    |
| TVSMOTOR            | CROMPGREAV |            | CNXT       | NFTVMCAP50 |           |
| ORCHIDCHEM          |            | RCOM       | GESHIP     | IGL        | INFY      |
| MRPL                | WELCORP    | DABUR      | DIVISLAB   | GODREJIND  | BOMDYEING |
| NAGAROIL            | JINDALSTEL | ADANIEMT   | HCC        | VOLTAS     | SUNTV     |
| ABIRLANUVO          |            | RAYMOND    | IVRCLINFRA | MAX        | GVKPIL    |
| YESBANK             | MRF        | SCI        | ABAN       | NHPC       | SOBHA     |
| ROLTA               | CNXPSE     | SIEMENS    | BEML       | FORTIS     | PRAJIND   |
| BANKINDIA           | MTNL       | ASIANPAINT | SRTRANSFIN | POWERGRID  |           |
| ORIENTBANK          |            | VIDEOIND   | VIPIND     | TATACOFFEE |           |
| ADANIPOWER          |            | ABB        | ESCORTS    | GAIL       | OFSS      |
| ZEEL                | UNIPHOS    | ABGSHIP    |            |            |           |

### Fresh Short

|            |       |            |          |            |
|------------|-------|------------|----------|------------|
| RUCHISOYA  | GLAXO | BALRAMCHIN | LUPIN    | BATAINDIA  |
| CUMMINSIND |       | ONGC       | MPHASIS  | TATACHEM   |
| JUBLFOOD   | CESC  | IOC        | ASHOKLEY | ARVIND     |
| UCOBANK    | STER  | ONMOBILE   |          | BAJAJ-AUTO |

## Performance Corner

### Daily Calls Monitor

[Buy Heromotoco @ 1980/1987 sl 1960 tgt 2037/2050](#)  
[Buy LT @ 1300/1307 sl 1287 tgt 1327/1339](#)  
[Buy Nifty June 12 future 5090/5500 \(spot\) sl 5070 tgt 5137/5147](#)  
[Buy Tata Steel @ 410.50/412.50 sl 407 tgt 416/420](#)  
[Buy Rellntra @ 512 sl 506 tgt 522/527](#)  
[Buy Axis Bank @ 1027/1033 sl 1010 tgt 1054](#)  
[Buy JSW Steel @ 643/645 sl 637 tgt 651/658](#)  
[Buy ICICI Bank @ 847/851 sl 839 tgt 860/871](#)  
[Buy Hindalco @ 123/124 sl 121 tgt 127/130](#)  
[Buy SBI @ 2180/2187 sl 2159 tgt 2210/2240](#)

[Buy Copper June 12 future @ 415.30/415.70 sl 413.50 tgt 417.90/419.00](#)  
[Buy Crude June 12 future @ 4677/4682 sl 4662 tgt 4707/4724](#)

## Analyst Certificate & Disclaimer

**DISCLAIMER:** The document is not for public distribution and has been furnished solely for information and must not be reproduced or redistributed to others. Opinion expressed is the current opinion as of the date appearing on the material only. Further, the information in the document has been printed on the basis of publicly available information; internal data and other reliable sources believed to be true and are for general guidance only but which may not be verified independently. While every effort is made to ensure the accuracy and completeness of information contained, the company takes no guarantee and assumes no liability for any errors or omissions of the information. No one can use the information as the basis for any claim, demand or cause of action. All investment information and opinion are subject to change without notice. Recipients of this material should rely on their own investigations and take their own professional advice. Each recipient of this document should make such investigations as it deems necessary to arrive at an independent evaluation of an investment in the securities of companies referred to in this document (including the merits and risks involved), and should consult their own advisors to determine the merits and risks of such an investment. This material is for personal information and none is responsible for any loss incurred based upon it. The investments discussed or recommended in this report may not be suitable for all investors. It should not be considered to be or taken as an offer to sell or a solicitation to buy/sell any security. Price and value of the investments referred to in this material may go up or down. Past performance is not a guide for future performance. Certain transactions - futures, options and other derivatives as well as non-investment grade securities - involve substantial risks and are not suitable for all investors. Reports based on technical analysis centers on studying charts of a stock's price movement and trading volume, as opposed to focusing on a company's fundamentals and as such, may not match with a report on company's fundamentals. Analyst who has issued this report, may, on the date of this report, and from time to time, have long or short positions in, and buy or sell the securities of the companies mentioned herein or engage in any other transaction involving such securities and earn brokerage or compensation or act as advisor or have other potential conflict of interest with respect to company/ies mentioned herein or inconsistent with any recommendation and related information and opinions.